

# Galasy II

LOW PROFILE CANOPY

## GALASY II



### FEATURES

- Value focused, budget-friendly canopy lighting solution
- Available in 4 wattages-30, 65, 100 and 120 Watts
- Low glare, even illumination and no pixelation for outstanding illumination
- High efficacy up to 155 LPW for maximum energy savings
- Universal retrofit solution for HID replacements for various sizes
- Driver accessible and field serviceable under canopy
- Pendant or surface mount options with 3/4" conduit
- IP66 rating to keep water and insects out



### SPECIFICATIONS

#### CONSTRUCTION

- Die-cast aluminum, low profile housing
- New construction or retrofit solution
- Targets a large range of applications
- Easy installation
- White powder coat finish
- Heat sink design to disperse heat away from fixture
- Suitable for wet locations

#### OPTICS

- Textured glass drop lens
- Type V distribution
- Low glare

#### INSTALLATION

- Surface or pendant mounted
- Easy installation and serviceable below the deck

#### ELECTRICAL

- Universal 120-277 input voltage
- Power Factor > 0.9 at full load
- Total Harmonic Distortion < 20% at full load
- 6 kV Surge Protection
- 0-10 Volt Dimmable Driver
- Operating temperature: -40°C to +40°C

#### CERTIFICATIONS

- UL Listed
- DLC® (DesignLights Consortium Qualified), with some Premium Qualified configurations. Please refer to the DLC website for specific product qualifications at [www.designlights.org](http://www.designlights.org)
- Wet Location Listed
- IP66 Rated
- 5 year warranty

### ORDERING GUIDE

Example: GSY-100-4K7

CATALOG # \_\_\_\_\_

GSY		-		-	
Series	Wattage			Color Temp	
GSY Galasy II	30 30W			4K7 4000K, 70 CRI	
	65 65W			5K7 5000K, 70 CRI	
	100 100W				
	130 130W				

KEY DATA	
Lumen Range	4,757 – 19,880
Wattage Range	30 – 127.9 Watts
Efficacy Range (LPW)	149 – 157
Reported Life (Hours)	≥ 60,000

# Galaxy II

LOW PROFILE CANOPY

## PERFORMANCE DATA

IES File name	Color Temperature	CRI	Delivered Lumens	Lm/W	Distribution Type
GSY-30-4K7.ies	4000	70	4757	157	Type V
GSY-30-5K7.ies	5000	70	4825	157	Type V
GSY-65-4K7.ies	4000	70	9768	149	Type V
GSY-65-5K7.ies	5000	70	9877	151	Type V
GSY-100-4K7.ies	4000	70	15395	153	Type V
GSY-100-5K7.ies	5000	70	15566	155	Type V
GSY-130-4K7.ies	4000	70	19662	154	Type V
GSY-130-5K7.ies	5000	70	19880	155	Type V

## STOCK ORDERING INFORMATION

Product	Lumens	B	U	G	LPW	CRI	CCT
GSY-30-4K7	4757	2	2	1	157	70	4000
GSY-30-5K7	4825	2	2	1	157	70	5000
GSY-65-4K7	9768	3	2	1	149	70	4000
GSY-65-5K7	9877	3	2	1	151	70	5000
GSY-100-4K7	15395	3	2	2	153	70	4000
GSY-100-5K7	15566	3	2	2	155	70	5000
GSY-130-4K7	19662	4	3	2	154	70	4000
GSY-130-5K7	19880	4	3	2	155	70	5000

\*Data is considered to be representative of the configurations shown. Actual performance may differ as a result of end-user environment application and inherent performance balances of the electrical components.

## ELECTRICAL DATA

Product	Nominal Wattage	Input Voltage (Volts)	Operating Current (Amps)	System Power (Watts)
GSY	30	120	0.252	30.29
		208	0.145	
		240	0.126	
		277	0.109	
	65	120	0.545	65.4
		208	0.314	
		240	0.273	
		277	0.236	
	100	120	0.838	100.5
		208	0.483	
		240	0.419	
		277	0.363	
	130	120	1.066	127.9
		208	0.615	
		240	0.532	
		277	0.462	

# Galasy II

LOW PROFILE CANOPY

## PROJECTED LUMEN MAINTENANCE

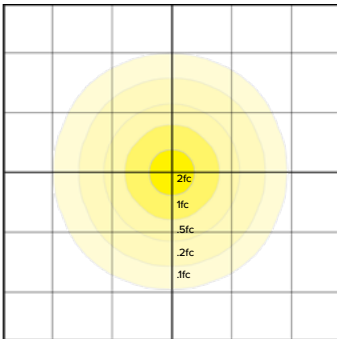
Ambient Temp.	Operating Hours					Calculated L70 (hours)
	0	25,000	*TM-21-11 36,000	50,000	100,000	
25°C / 77°F	1.00	0.97	0.95	0.93	0.84	205,000
40°C / 104°F	0.99	0.95	0.93	0.90	0.81	178,000

1. Projected per IESNA TM-21-11 \* (Nicha NFSL757DT-VT, 150mA, 85°C Ts, 10,000hrs) Data references the extrapolated performance projections for the base model in a 40°C ambient, based on 10,000 hours of LED testing per IESNA LM-80-08

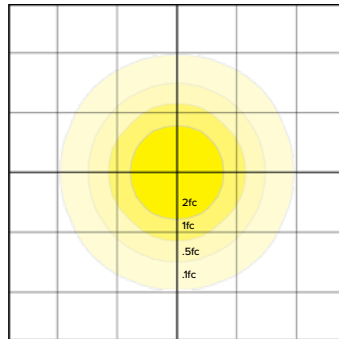
## LUMINAIRE AMBIENT TEMPERATURE FACTOR (LATF)

Ambient Temperature		Lumen Multiplier
0°C	32°F	1.03
10°C	50°F	1.01
20°C	68°F	1.00
25°C	77°F	1.00
30°C	86°F	0.99
40°C	104°F	0.98
50°C	122°F	0.97

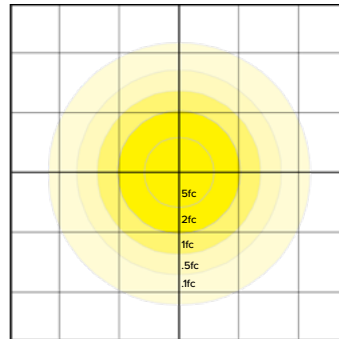
## PHOTOMETRY



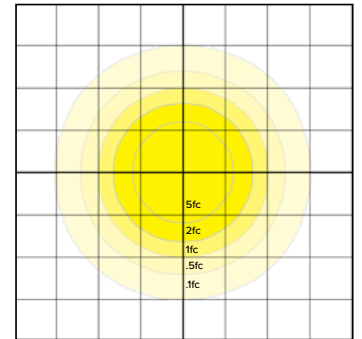
**GSY-30-4K7**  
Scale: 1 = 20 ft.  
Mounting Height: 25 ft.



**GSY-65-4K7**  
Scale: 1 = 20 ft.  
Mounting Height: 25 ft.



**GSY-100-4K7**  
Scale: 1 = 20 ft.  
Mounting Height: 25 ft.

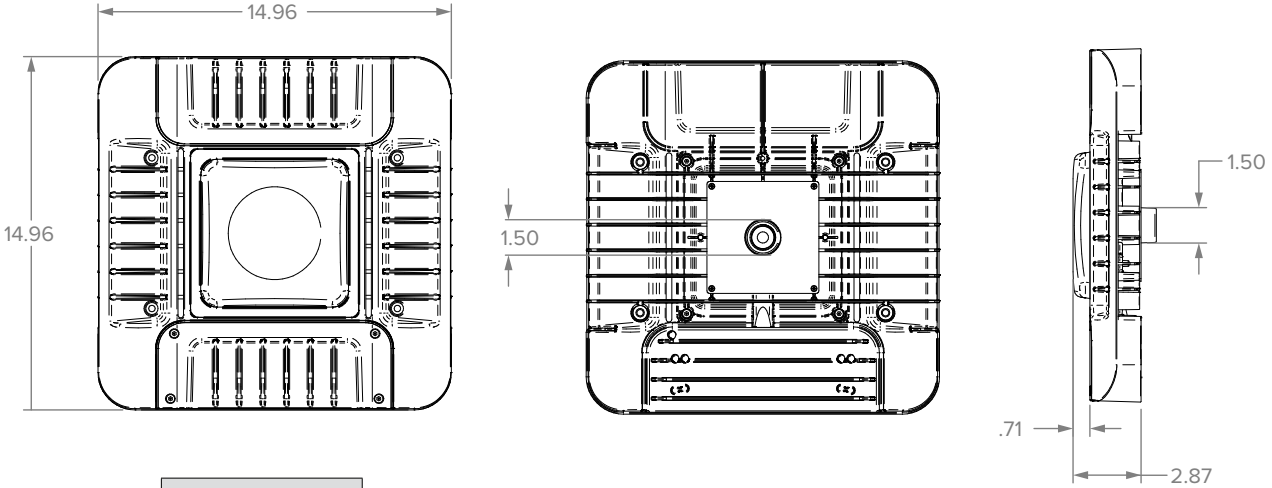


**GSY-130-4K7**  
Scale: 1 = 20 ft.  
Mounting Height: 15 ft.

# Galaxy II

LOW PROFILE CANOPY

## DIMENSIONS



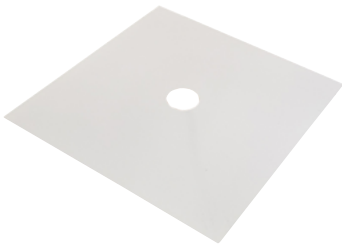
	Weight
Product	10 lbs. (4.53 kg)
Carton	12 lbs. (5.44 kg)

## MOUNTING ACCESSORIES

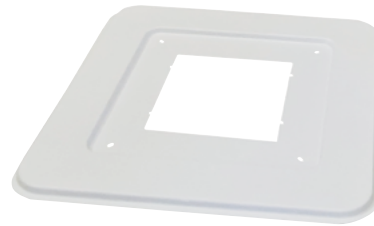
### Accessories (order separately)

- 93133148** WHITEWAY 15 IN CVR PLT WHT VSH/GSY Retrofit cover plate for LSI Encore 13" square-replacement for 10" opening
- 93133149** WHITEWAY DECORATIVE CVR PLT VSH/GSY 26" Decorative Beauty Plate for Canopy Retrofits
- 93133151** WHITEWAY HID RETRFT KIT WHT VSH/GSY Universal HID retrofit kit (fits square surface mounted retrofit kit for 21" Whiteway Vision, Riviera II, Thunderbird housing, 22" Jet Philips Hustonian SHO/RHO2 and 23" LSI Masters/ Dakota.\*)
- 93133177** WHITEWAY STEM AND JUNCTION BOX

**93133148**



**93133149**



**93133151**

- Measure outside dimension of existing housing

**93133177**

